

Community Profile

GREDA REGION
West Central Illinois

2010



2010 Community Profile

Location



Galesburg is located in West-Central Illinois approximately three hours from Chicago and St. Louis and about one hour east of the Mississippi River. Great schools and a low cost of living create a skilled and cost-effective workforce that is immediately available in this transportation hub. The area is served by Interstate 74 and two US highways and has a municipal airport. BNSF rail mainlines carry 150–200 trains through Galesburg per day in seven directions. Over three million square feet of available industrial property and 350 acres of rail and interstate served land are ready to provide transportation to the 35 million people living within 300 miles of Galesburg. The Galesburg area is a great location for transportation companies and their suppliers, assembly and distribution, renewable energy production, commercial and industrial services and much more.

This railroad city has much to experience from unique shopping, antiques, the arts, museums, walking tours and annual events.

The **Galesburg MSA** (Metropolitan Statistical Area) includes ten Illinois counties within a 50 mile radius of Galesburg including the Knox, Fulton, Henderson, McDonough, Mercer, Henry, Peoria and Stark and Des Moines and Scott County in Iowa.

Location Details

Land Area	17.1 square miles
Density	2,000 persons per square mile
Persons Per Household	2.5
Latitude	40°57'8" N
Longitude	90°22'7" W

Galesburg is located in the center of the Midwest Region in close proximity to the following cities:

<i>Peoria</i>	47 miles	<i>Quad Cities</i>	50 miles
<i>Chicago</i>	198 miles	<i>St. Louis</i>	215 miles
<i>Indianapolis</i>	258 miles	<i>Kansas City</i>	323 miles
<i>Cincinnati</i>	364 miles	<i>Nashville</i>	459 miles
<i>Memphis</i>	466 miles		

Galesburg is located in West Central Illinois within four interstates:

I-74 - 1.5 miles (north-west)	I-55 - 55 miles (south-east)
I-80 - 30 miles (east-west)	I-88 - 35 miles (north-east)



Income Characteristics

Median Family Income (2007)	\$35,092
Average Household Income	\$43,571
Per capita Personal Income (2007)	\$22,421

Source: US Census Bureau



Population Characteristics

Population Trends

Location	2000 est.	2005 est.	2007 est.
Galesburg	33,706	34,851	34,861
Knox County	54,043	54,081	54,098
Galesburg MSA	887,013	891,286	891,340

Source U.S. Census Bureau

Race Ethnicity (2007 est)

	Number	Percent
White	29,898	85
Black	3,394	8
American Indian, Eskimo, Aleut	76	0.2
Asian	337	1
Native Hawaiian/Pacific Islander	8	0
2 or more races	835	2.3
Hispanic Origin	1,646	5
Total Population	34,861	100

Source U.S. Census Bureau

Gender (2007 est.)

	Number	Percent
Male	17,572	50.4
Female	17,289	49.6
Total Population	34,861	100

Source U.S. Census Bureau ACS 2007 ACS Profile Bureau of Economic Analysis IDES

Age Structure (2007)

	Number	Percent
0-14 years	6,038	18.5
15-19 years	2,462	7.1
20-24 years	2,877	8.3
25-34 years	4,436	12.7
35-54 years	9,677	27.8
55-64 years	3,142	5
65 years and over	6,214	20.6

Median Age: 38.3

Source U.S. Census Bureau

NOTE: Data are limited to the household population and exclude the population living in institutions, college dormitories, and other group quarters.

Climate

Average Winter Temp	22° F
Average Summer Temp	78° F
Avg. Annual Rainfall	36.8"
Average Annual Snowfall	14.6"

2010 Community Profile

Access to Markets

Galesburg's strategic location relative to the Midwest transportation infrastructure provides great advantages, especially in response to the growing congestion in Chicago, as more manufacturing is done off-shore, meaning more goods need to be shipped across the country.

Central location and major transportation assets are among the greatest assets the Galesburg area has to offer. BNSF Railway Company's seven main lines and railcar "Hump" classification yard channel over 150–200 trains through Galesburg every day. Several distribution companies operate regional and national distribution centers from Galesburg's Business Parks. A new 350 acre Logistics Park is shovel ready to help more companies serve Chicago, St. Louis, Des Moines, Indianapolis, Milwaukee and the 35 million consumers in Galesburg's 300-mile radius market.

Railroad Connections

- ³! **Burlington Northern Santa Fe—BNSF Railway** (directly served)
- ³! **United Pacific** (via BNSF to Quad Cities)
- ³! **TP & W Short Line** (directly served)
- ³! **NS, CSX, CN, UP** (via TP&W)

Motor Freight Service

The Galesburg region is served by over 100 motor freight carriers, including all major national carriers. With major break-bulk facilities located in the area, consistent direct service to and from the area is assured.

Selected Major Trucking Carriers

- ³! ABF Freight System, Inc.
- ³! Brandt
- ³! RoadLink USA
- ³! Midwest CCX
- ³! Roadway Express, Inc.
- ³! Standard Forwarding
- ³! USF Holland
- ³! Yellow Freight System, Inc.
- ³! D.C. Moore

Air Service

Galesburg Municipal Airport
 Quad City International Airport
 Peoria Airport
 United Parcel Service (UPS)

Air Freight and Cargo Firms



Airborne Express (DHL)
 BAX Global
 Fed Ex
 UPS
 Spee-Dee Delivery
 U.S. Customs Port of Entry
 Foreign Trade Zone LPG
 (Pending)
 Public Warehousing



Transit Time

Distance and Travel time from the Galesburg Area to:

City	Highway Miles	Days by Rail	Days by Truck
Atlanta	754	5	2
Chicago	198	1	1
Cleveland	514	4	1
Dallas	866	3	3
Denver	891	4	3
Detroit	450	4	1
Kansas City	345	2	1
Los Angeles	1905	6	4
Milwaukee	239	1	1
Minneapolis	411	3	1
New York	959	5	3
New Orleans	895	5	3
St Louis	215	2	1

Public Transportation

Galesburg provides fixed route service (buses) through a not-for-profit—Galesburg Transit and ADA Para transit through a City Division called Handivan.

Galesburg Transit operates 5 fixed routes from 7 a.m. to 6 p.m. Monday through Saturday. The buses meet hourly at the intersection of Kellogg/Main Streets. Galesburg Transit operates with 6 buses in-service. In 2009, Galesburg Transit plans to add a fourth bus route. Galesburg Transit provided 141,126 rides in 2008.

The Handivan also operates the same hours and days. In addition, the Handivan provides evening service until 10 p.m. Reservations must be made in advance for evening service. The Handivan operates with 6 medium duty vans that are lift equipped which provide curb to curb service for the disabled. Handivan provided 17,349 rides in 2008 and has 1,754 registered riders.

In 2008:

- ³! Galesburg Transit provided 141,126 rides.
- ³! The Handivan provided 17,349 rides.
- ³! The Handivan has 1,754 registered riders.



2010 Community Profile

Labor Market Characteristics



Major Employers

Firm name	Employees
Burlington Northern Santa Fe Railway	1,115
OSF St. Mary Medical Center (Galesburg) and OSF Holy Family Medical Center	973
Galesburg Cottage Hospital	500
Dick Blick Company	530
Community School District #205	594
Hy-Vee Food Stores	574
Bridgeway/Bridgeway Training	450
Carl Sandburg College	430
Knox County	420
Knox College	407
Wal-Mart	370
Henry C. Hill Correctional Center	303
Monmouth College (Monmouth)	280
Knox Warren Special Education	264
St. Mary Square	241
City of Galesburg	237
Galesburg Clinic	190
The Register Mail	140
Smurfit-Stone	120
Gates Rubber	114
NAEIR	110
Menards	105
United Facilities	100
Heat and Control	91
Holm Industries	80
G&M Distributors	72
Gallatin River Communications	70
The Farmers and Mechanics Bank	60
Wells Fargo	48
Protexall Inc.	43
Derby Industries	30

Source: Galesburg area businesses (1/15/09)

Labor Force

Labor Force	26,113
Total Employment	24,759
Percent Employment	94.8%
Total Unemployed	1,354
Percent Unemployed	5.2%

Source: US Census Bureau 2008

Employment by Industry

Industry	Percent
Non-Agricultural & Salary Workers	38.9
Services	21.8
Manufacturing	12.4
Retail Trade	12.6
Government	2.4
Transportation, Warehousing, Utilities	5.0
Wholesale Trade	1.7
Construction & Mining	1.8
Finance, Insurance, Real Estate	1.6
Information	1.8

Source U.S. Census Bureau /ESRI

Employment Trends

KNOX COUNTY

Year	Labor Force	Employed	Unemployed	Rate
2007	26,113	24,759	1,354	5.2
2006	25,703	24,315	1,387	5.4
2005	25,682	23,773	1,909	7.4
2004	25,918	23,879	2,039	7.9
2003	26,069	24,042	2,027	7.8
2002	26,703	24,769	1,934	7.2
2001	27,269	26,696	1,573	5.8
2000	27,985	26,621	1,364	4.9

GALESBURG

Year	Labor Force	Employed	Unemployed	Rate
2007	14,942	14,130	812	5.4
2006	14,735	13,897	838	5.7
2005	14,681	13,587	1,094	7.5
2004	14,886	13,675	1,211	8.1
2003	14,978	13,791	1,187	7.9
2002	15,365	14,237	1,128	7.3
2001	15,667	14,752	981	5.8
2000	16,119	15,313	806	5.0

Source: Illinois Department of Employment Security; Local Area Unemployment Statistics (LAUS)



2010 Community Profile

Education



Galesburg—Population 25+ by educational attainment

	Number	Percent
Less than 9th grade	1,192	5.3%
9th-12 Grade, No Diploma	3,510	15.5%
High School Graduate	7,752	34.2%
Some College, No Degree	5,283	23.4%
Associate Degree	1,531	6.8%
Bachelor's Degree	2,130	9.4%
Masters/Professional/Doctorate Degree	1,246	5.5%
Total	22,624	100%

Source: US Census Bureau, Census 2000 Summary File 3; ESRI

Galesburg MSA—Population 25+ by educational attainment

	Number	Percent
Less than 9th grade	30,840	5.3%
9th-12 Grade, No Diploma	65,284	11.2%
High School Graduate	199,207	34.2%
Some College, No Degree	136,653	23.5%
Associate Degree	40,929	7.0%
Bachelor's Degree	72,605	12.5%
Masters/Professional/Doctorate Degree	36,758	6.3%
Total	582,276	100%

Source: US Census Bureau, Census 2000 Summary File 3; ESRI

K-12 Enrollment 2007-08

City of Galesburg	Number
Total Enrollment	5,077
Total Public	4,726
Total Private	351

Source: Illinois State Board of Education

Community	Enrollment
Carl Sandburg College	3,227

Four Year	Enrollment
Knox College	1,382
*Western Illinois University	13,400
*Bradley University	5,057

*Within Commuting Distance
Source: Illinois State Board of Education

Other Galesburg Area Educational Facilities

Facility	Number
Other Area Public School Systems	9
Private and Parochial Schools	2
Trade and Technical	1
Community College	1
Four-Year College	9

Source: Illinois State Board of Education

Community Unit School District #205



Community Unit School District #205 is committed to working together with teachers, parents and the community to offer a comprehensive and challenging education for every student. We want each student to be well-prepared for life in an ever-changing society.

To that end, we emphasize essential critical thinking skills in addition to basic fundamentals in the language arts, sciences, mathematics and social studies. Our curriculum, aligned with state and national standards, is both challenging and relevant to students. We hope this strong foundation helps them to adapt and succeed in their years beyond graduation.

As a District, we have high expectations for our students. Teachers, parents and administrators work together in both building and district improvement teams in an ongoing effort to meet student needs and continue to achieve higher levels of excellence district-wide.

Professional development for all certified employees is a priority in District #205.

As a whole, the attitude in District #205 reflects a feeling of pride and investment in our schools, our students and our staff.

Carl Sandburg College



Carl Sandburg College is dedicated to serving the educational needs of west and central Illinois. The college has served the area for over 40 years with accreditation that has been approved by the North Central Association of Colleges. Individual and community improvement through education is the goal of Carl Sandburg College. To achieve this end, CSC strives to give individuals the ability to think critically, to realize their human potential, and to become a constructive force in their environment. The mission

of Carl Sandburg College is to provide accessible, quality education in a caring environment by keeping the learner's needs at the center of decision making and by working in partnership with communities of the College district.

CSC has many cooperative alliances that develop programs with neighboring institutions and seek to maintain or expand alliances within and beyond the College district. Along with providing exceptional associate degree level education for students, CSC also features over 50 occupational programs and continuing ed/adult learning in a hi-tech environment. Carl Sandburg College believes in providing educational experiences of occupational, preparatory, and continuous nature. A wide range of services accessible to the students and to the community are made available as well. The college's motto and message to the community is "Find your future at CSC!"

Knox College



Knox College is a selective, four-year liberal arts college consistently ranked among the top 100 national liberal arts colleges by U.S. News and World Report. The Washington Post lists Knox College as one of the top liberal arts colleges based on its commitment to access, independent research and community service — where more than 85 percent of students complete an independent research or creative project by the time they graduate. Known for its diversity and academic quality,

Knox College educates students from 45 states and 44 countries and offers more than 400 performance, lectures, cultural and sporting events each year.

2008 Community Profile

Quality of Life



Cost of Living

Overall	Galesburg	Chicago	Peoria	Bloomington Normal	U.S. Average
Housing	88.8	128.1	92.8	98.7	100
Food	96.9	107.6	103.8	92.4	100
Transportation	100.7	109.5	106.5	96.6	100
Utilities	107.9	117.9	110.2	93.6	100
Health	96.6	103.6	99.2	94.4	100
Miscellaneous	96.7	100.4	101.0	89.6	100

Source: ACCRA Cost of Living Index: Fourth Quarter 2008— Index values and average prices in relation to the national average of 100 percent.

The ACCRA Cost of Living (COLI) Web Calculator allows GREDA web visitors to make their own cost of living comparison between U.S. Cities. It can be found at www.greda.org.

Home Price Comparison—New Construction

*Galesburg	\$262,500
Quad Cities (IL/IA)	\$274,216
Des Moines	\$277,500
Bloomington-Normal	\$264,500
Miami	\$424,256
Seattle	\$414,219
Chicago	\$357,168
Los Angeles	\$853,900
New York (Manhattan)	\$1,115,000

* Numbers are based on a 2,400 square-foot home, new construction
 * Data provided by the ACCRA Cost of Living Index, Fourth Quarter 2008.

Medical Care

Hospitals	3
Number of Beds	436
Physicians, Surgeons & Dentists	216

The region offers two Level II trauma centers, up-to-date land and air ambulance service, cancer center, immediate care center, modern community mental health facility, home nursing and residential care facilities. In addition, Galesburg has one of 32 level "A" hazardous material response teams (Hazmat) in Illinois.

So much to see and do in Galesburg and the Knox County Area!

RECREATION AND ENTERTAINMENT

Public Parks	25
Parkland Acres	731
Public Swimming Pools	7
Public Golf Courses	3
Country Clubs	2
Public Libraries	1
Museums	5
Art Galleries	2
Symphony Orchestra	1
Community Theatres	4
Indoor Sport Centers	4
YMCA	1
Water Parks	1

COMMUNITY SERVICES

Motels/Hotels	9
Number of Rooms	607
Bed and Breakfast	8
Number of Rooms	20
Restaurants	85
Number of Banks	9
Number of Savings and Loans	2
Number of Credit Unions	2

MEDIA

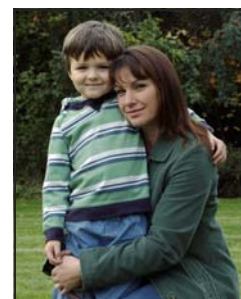
Local Newspapers	3
Daily	1
Weekly	2
Local Radio Stations	5
Cable TV Channels Received	72
Campgrounds	4

CHURCHES

Protestant	79
Catholic	9
Jewish Synagogues	1

ANNUAL EVENTS

Martin Luther King Jr. Celebration Holiday Breakfast • Knox College International Fair • Chocolate Festival • Rootabaga Jazz Festival • Sandburg Days • Marti Gras • Carl Sandburg College Concert Series • Knox Galesburg Symphony • The Big Read • Kites over Lake Storey • Farmers Market • More on 34 • Galesburg Railroad Days • Big Bang Boom • Taste of Galesburg • Galesburg Heritage Days • River-2-River Cruise Night • National Stearman Fly-In Days • Art in the Park • Galesburg Scarecrow Festival • Knox County Scenic Drive • Christmas Parade and Shopping • Historic Downtown and Seminary Street • Henderson Street Shopping • Sandburg Mall • Seminary Square • Prairie Players Community Theatre • Coffee Bean Theatre • Historic Orpheum Theatre—Red Carpet Series & other events • Knox College Community Events •



2010 Community Profile

Message from the Chairman of the Board

Economic Development efforts on a local basis are dependant in part, on the broader forces impacting our national economy and our global competitiveness. A cursory review of international data reflects the following % changes from one year ago (The Economist – January 2010):

	GDP	CPI	TRADE BALANCE	UNEMPLOYMENT RATE
USA	+2.7	+1.8	-523.9	10.0
JAPAN	+1.5	-1.9	+27.9	5.2
CHINA	+8.6	+0.6	+218.4	9.2 (2008)
BRITAIN	+1.3	+1.9	-126.8	7.9
CANADA	+2.4	+1.0	-3.4	8.5

According to the Wall Street Journal 2010 Index of Economic Freedom, the United States is now less free than we were as recently as 2008. The U.S. has slipped from 5th Place in 2008 (with a score of 80.6) to 8th (78) and is trailing Hong Kong (89.7), Singapore (86.1), Australia (82.6), New Zealand (82.1), Ireland (81.3), Switzerland (81.1), and Canada (80.4).

The “economic freedoms” referred to include such factors as: Government size; Freedom from Corruption; Labor Freedom; Trade and Investment Opportunities; Property Rights; and Financial Flexibilities.

As we focus on the Economic Development environment nurtured by the State of Illinois, the Pew Center on the States (November 2009) reports that Illinois is graded higher than only California in its fiscal discipline to balance our state budget (not accomplished since 2001).

Further, Illinois is:

- ³! 48th in job creation THE LAST 25 YEARS,
- ³! 44th in personal income growth,
- ³! Last in the Midwest in agricultural investments,
- ³! 49th in exporting college-bound high school seniors out of state,
- ³! 48th in net out-migration (we have lost 736,000 citizens over the past decade),
- ³! 44th in competitiveness (American Legislative Exchange Council-2009).

It is against the backdrop of this business environment that private economic development organizations, such as GREDA, must implement new strategies in response to current challenges. Among these have been/will be:

- ³! Structural improvements to our Board and Executive committees (and meetings).
- ³! Dramatically improving our web site.
- ³! Bench marking ourselves to successful peer organizations.
- ³! Thinking Globally, Acting Regionally, and Delivering Services Locally.
- ³! Effectively “Branding” our region.
- ³! Relationship building with private investors and public funding partners.
- ³! Maximizing the advantages of our Foreign Trade Zone (FTZ).
- ³! Support of Business Retention, Incubation, and Creation Activities.
- ³! Effective communications.

While GREDA is faced with much uncertainty, we will embrace these challenges as a new source of inspiration and energy to fulfill our mission. I want to express appreciation for the work of our employees, the financial support of our Investors and Public Partners, and for the generous contributions of time and effort from our Board and Executive committee members. I choose to believe in a better future and invite you to join me in our commitment to making this goal a reality.



Sincerely,

A handwritten signature in black ink that reads "Thomas A. Schmidt". The signature is written in a cursive, flowing style.

Thomas A. Schmidt, Chairperson

2010 Community Profile

Economic Development



The Galesburg Regional Economic Development Association (GREDA) is a 501(c) 6 not-for-profit economic development company with a land development subsidiary and business incubator. Working with the City of Galesburg and Knox County, along with other development partners, Galesburg's development team can provide unique services to meet the needs of businesses in the area. GREDA is the first point of contact for information and services available to new and expanding companies in the Galesburg area, as well as referrals to ally organizations with specific areas of expertise. Information and services available in Galesburg include:

- ! μ Industrial site and building profiles
- ! μ Business incubator facilities
- ! μ Enterprise Zone programs
- ! μ Low-interest business financing programs
- ! μ Employer training program information
- ! μ Local vocational and computer training centers
- ! μ Tax Increment Financing (TIF) programs
- ! μ Build-to-suit and lease-back options
- ! μ Business start-up assistance
- ! μ General, statistical and demographic information on Galesburg and the surrounding region
- ! μ Cost information and comparisons
- ! μ Transportation information
- ! μ Wage and labor market information

GREDA Staff

Greg Mangieri, Interim President
Dick Johnson, Vice President of Operations
Michelle Smith, Marketing & Communications Director

Visit our Website at www.greda.org

GREDA

185 South Kellogg Street
 PO Box 749
 Galesburg, IL 61401-0749
 Phone: 309-343-1194
 Fax: 309-343-1195

Economic Development Contacts



Greg Mangieri
 Interim President
 GREDA
 309-343-1194
 Economic Development



Cesar Suarez
 Economic Development Director
 City of Galesburg
 309-345-3680
 Economic Development

Jolene Willis
 Executive Director
 WIEDP
 81 Public Square
 Monmouth, IL 61462
 309-734-4253

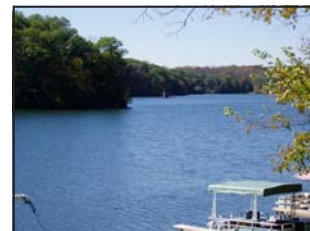


Robert Maus, President
 Chamber of Commerce
 309-343-1194

Diane Bruening
 Executive Director
 Convention & Visitors Bureau
 309-343-2485



Catarino Garza, Manager
 Entrepreneurship Center
 of West Central Illinois
 309-343-1194



PO Box 749
 Galesburg, IL 61401
 309-343-1194—Phone
 309-343-1195—Fax

